



JOHNRED R. LOPEZ

Umm Al Hassam, Bahrain | +973 36742472 | johnrdlopez@gmail.com

Driven to discover the potential of interior spaces with a balanced integration of form, aesthetics, and function. Determined to apply methods gained from undergraduate degree to hands-on work experience in expanding horizon to becoming a well-rounded designer.

ACADEMIC WORK ACCOMPLISHMENTS

☐ INTERNSHIP: **TURNOVER AND INTERIOR RENOVATION OF VAWC DESK OFFICE**

Taguig, Philippines

May 2024

PROJECT MANAGER

- Facilitate the overall project of turnover of the VAW desk to the barangay hall
- Oversee the painting job, assembly, and overall interior renovation of the office

☐ INTERNSHIP: **KOMUNIDAD X PROJECT KANLUNGAN VAW DESK EXHIBIT**

Manila, Philippines

May 2024

OVERALL HEAD OF MOCK-UP COMMITTEE

- Manage the overall production of as-built furniture for the batch exhibit
- Responsible for tracking the progress and communicating with different committees

☐ THESIS: **REDESIGNING LOCAL BARBERSHOP LAYOUT FOR THE PROMOTION OF POSITIVE COPING MECHANISMS IN UNIVERSITY BELT MANILA USING PLACE ATTACHMENT THEORY**

Manila, Philippines

December 2023

RESEARCHER

- Producing extensive research about interior spaces of community barbershops
- Designing and defending research in front of panelists

EDUCATION

BS INTERIOR DESIGN

College of Fine Arts and Design

UNIVERSITY OF SANTO TOMAS

Cum Laude

2024

HUMANITIES AND SOCIAL SCIENCES

Senior High School

UNIVERSITY OF SANTO TOMAS

With Honors

2020

HARD SKILLS

AutoCAD | SketchUp | 3Ds Max | Adobe Photoshop | Canva

Manual and Digital Drafting

3D Modeling

3D Rendering

Graphic Design

SOFT SKILLS

Communication | Teamwork | Problem-Solving | Adaptive | Punctual

Johnred Lopez | interior design

PORTFOLIO



**"discovering
wonders
of empty
spaces"**

ABOUT ME

Motivated with the continuous pursuit of finding a balance of form and function in interior design. Determined to produce visual harmony with holistic integration of principles of design.

BS INTERIOR DESIGN
College of Fine Arts & Design
UNIVERSITY OF SANTO TOMAS
2024



CONTENT



01
RESIDENTIAL DESIGN
Living & Dining Area



02
INSTITUTIONAL DESIGN
School Library



03
SERVICE INDUSTRY
DESIGN
Barbershop



04
HEALTH DESIGN
Hospital



05
HOSPITALITY DESIGN
Bar



06
FURNITURE DESIGNS

LET'S CONNECT

✉ johnrdlopez@gmail.com

Be [behance.net/johnredlopez](https://www.behance.net/johnredlopez)





01 RESIDENTIAL DESIGN

Living & Dining Area

MOOD BOARD



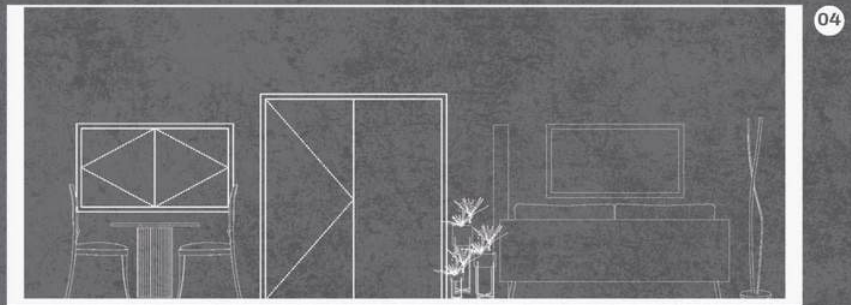
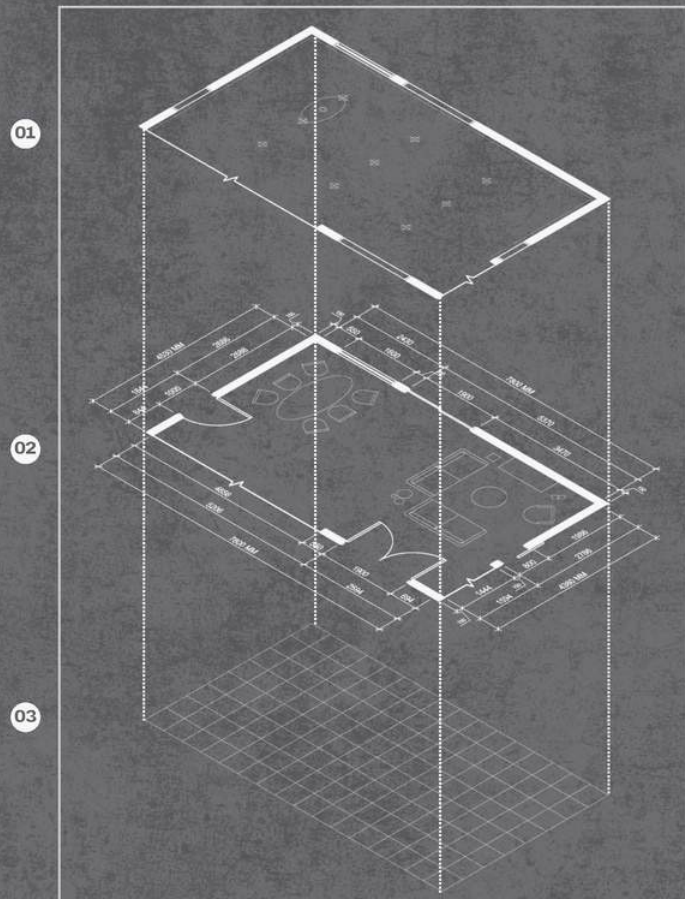
CONCEPT

A light and airy contemporary take on residential interiors of Bahay na Bato (stone house) in Batanes. It is a space that entails a structure of thick limestone walls and triangular cogon roofs. It features neutral tone colors inspired by bringing nature to homes.

TOTAL SQM

32.85 SQM

MATERIAL BOARD



LEGEND 01 REFLECTED CEILING PLAN 02 AS-BUILT PLAN & FURNITURE LAYOUT 03 FLOOR PATTERN 04 ELEVATION

02 INSTITUTIONAL DESIGN

School Library

MOOD BOARD



CONCEPT

The concept of the space comes from mountains. It incorporates organic forms and curved edges of mountainous topography. The design heavily revolves around the shape and color. Key consideration of the learner's demography, such as modular pieces of furniture to fit the learner's age bracket to enhance the overall learning experience of its users. Lastly, the mountains-inspired space aims to enrich young minds with environmental awareness through design.

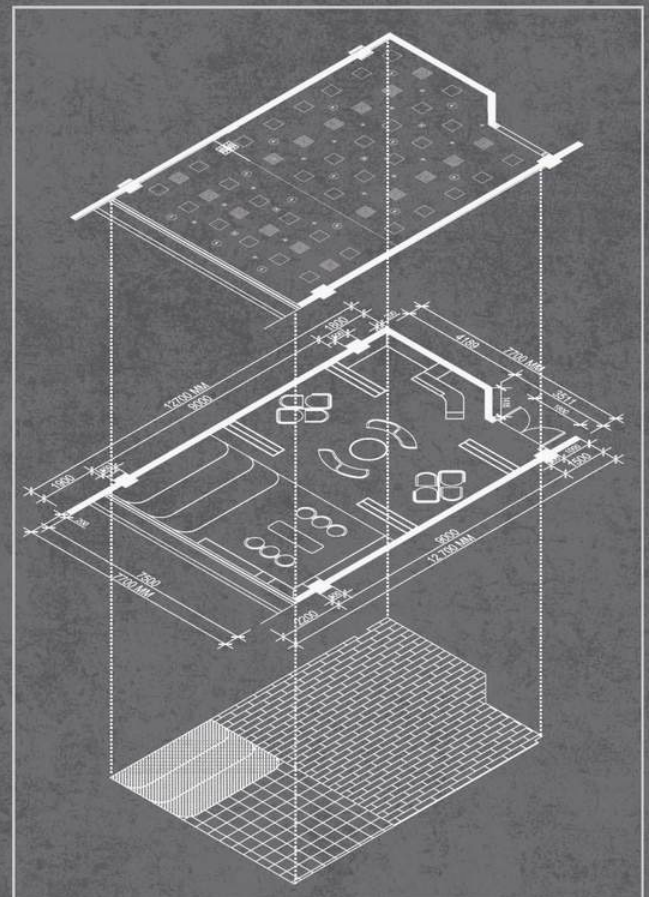
TOTAL SQM

97.80 SQM

MATERIAL BOARD



- 1) carpet tiles
- 2) porcelain tiles
- 3) green carpet
- 4) teak wood
- 5) narra wood
- 6) green laminated wood
- 7) blue printed upholstery

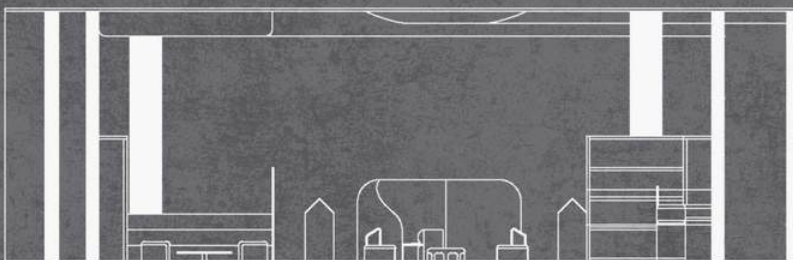


01

02

03

04



LEGEND

01 REFLECTED CEILING PLAN

02 AS-BUILT PLAN & FURNITURE LAYOUT

03 FLOOR PATTERN

04 ELEVATION

03 SERVICE INDUSTRY DESIGN

Barbershop

MOOD BOARD



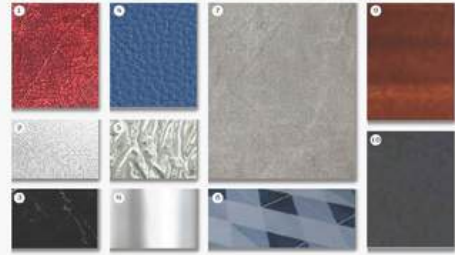
CONCEPT

The space centers on human reflection and haircut transformation. The design uses textured glass, metal, and stained oak to evoke expressionist movement in the haircut process. A sophisticated grunge approach to the aesthetic value represents the high perceived virility and youthfulness.

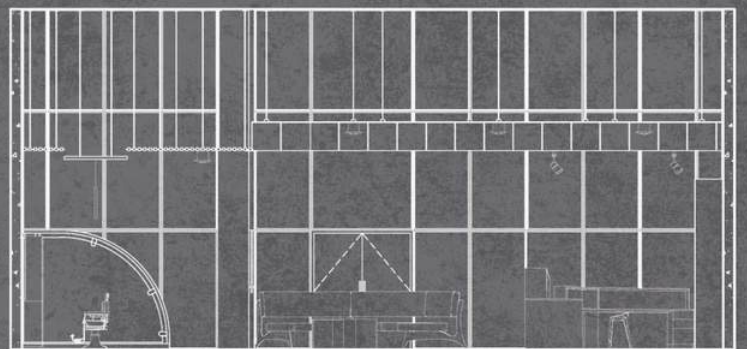
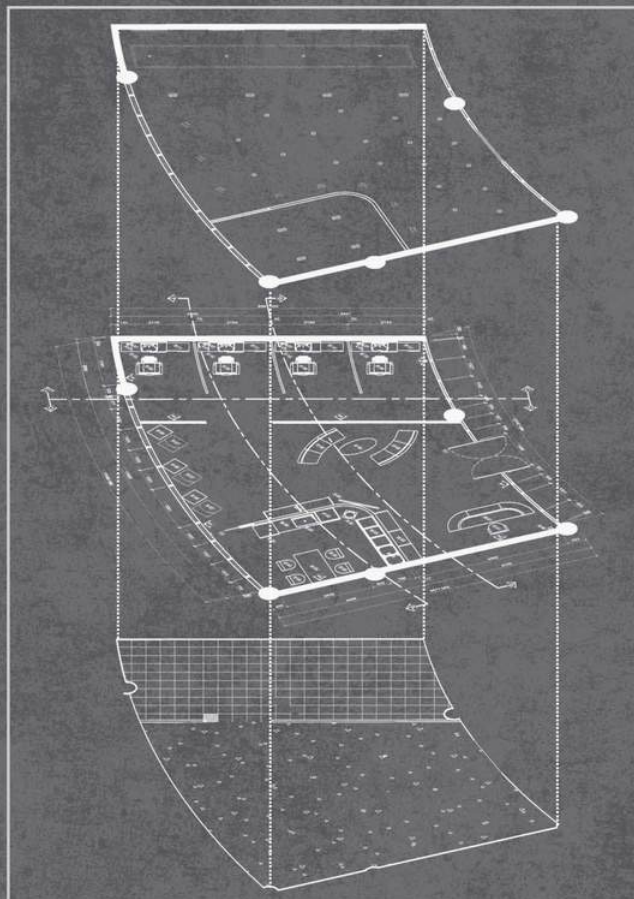
TOTAL SQM

103.14 SQM

MATERIAL BOARD



- 1) red leather fabric
- 2) frosted glass
- 3) black marble stone
- 4) blue leather fabric
- 5) frosted glass
- 6) aluminum
- 7) concrete tiles
- 8) mosaic tiles
- 9) mahogany wood
- 10) ash gray metal panel



LEGEND

- 01 REFLECTED CEILING PLAN 02 AS-BUILT PLAN & FURNITURE LAYOUT 03 FLOOR PATTERN 04 ELEVATION



04 HEALTH DESIGN

Hospital

MOOD BOARD



CONCEPT

The space explores the mixture of elements of adaptability and progress. It reflects the vibrant heritage of developing cities of "probin-syudad". The space is developed within the movement of inner municipalities while creating a relaxed atmosphere.

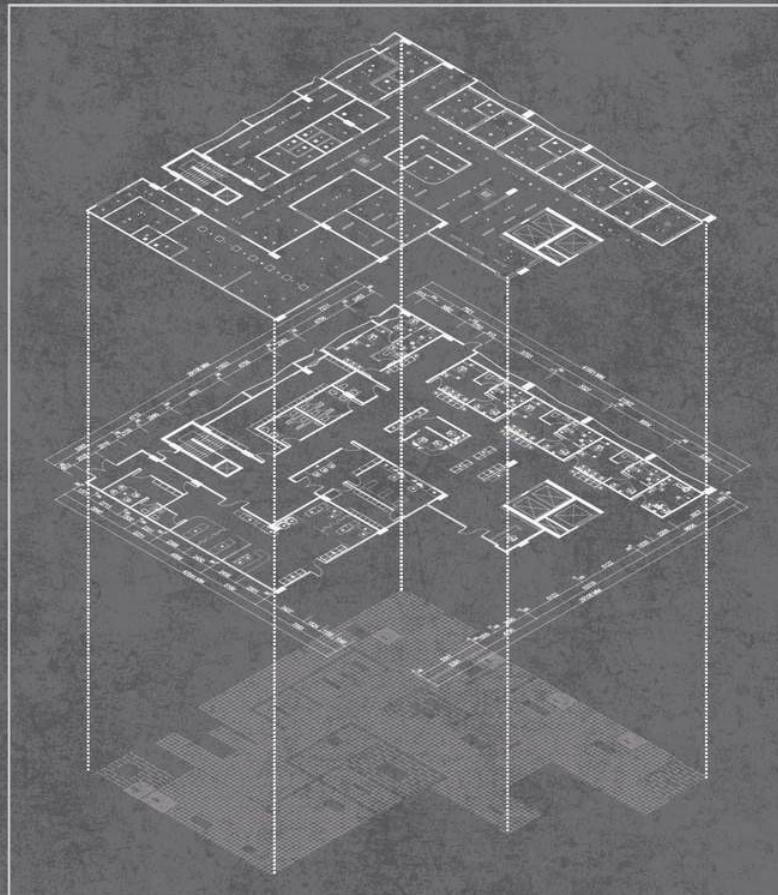
TOTAL SQM

641.39 SQM

MATERIAL BOARD



- 1) blue paint
- 2) wood detail
- 3) laminated oak
- 4) oak wood
- 5) cotton fabric
- 6) terrazzo tiles
- 7) acoustic board
- 8) matte black steel
- 9) wood railing

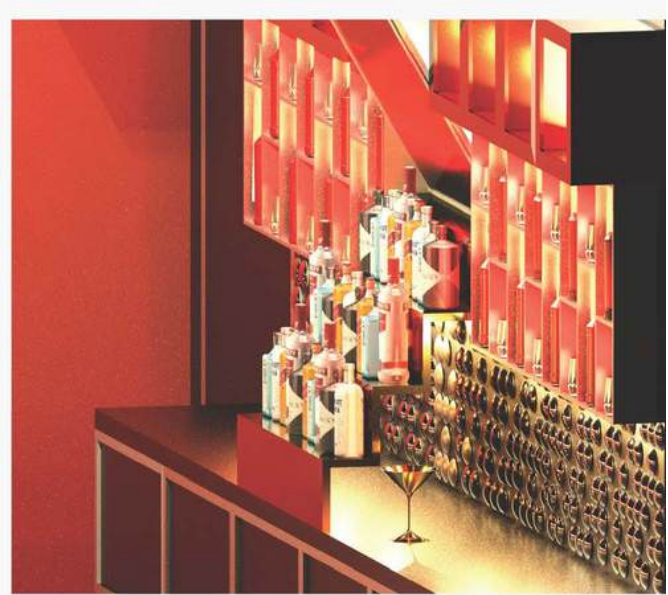


LEGEND

01 REFLECTED CEILING PLAN

02 AS-BUILT PLAN & FURNITURE LAYOUT

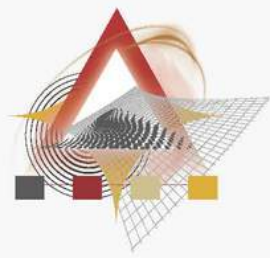
03 FLOOR PATTERN



05 HOSPITALITY DESIGN

Bar

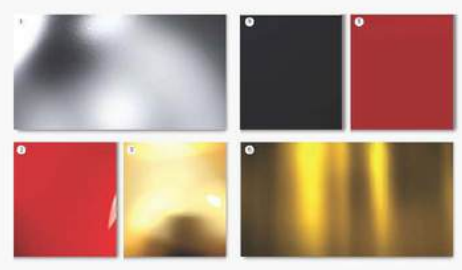
MOOD BOARD



CONCEPT

The design of the space exudes luxury and sophistication. It creates a warm and dark ambiance for leisure and relaxation. The design mainly plays with metallic materials and bold colors scheme like red, gold, and black.

MATERIAL BOARD



- 1) aluminum silver metal
- 2) red plastic
- 3) gold tinted mirror
- 4) matte black paint
- 5) matte maroon paint
- 6) gold metal

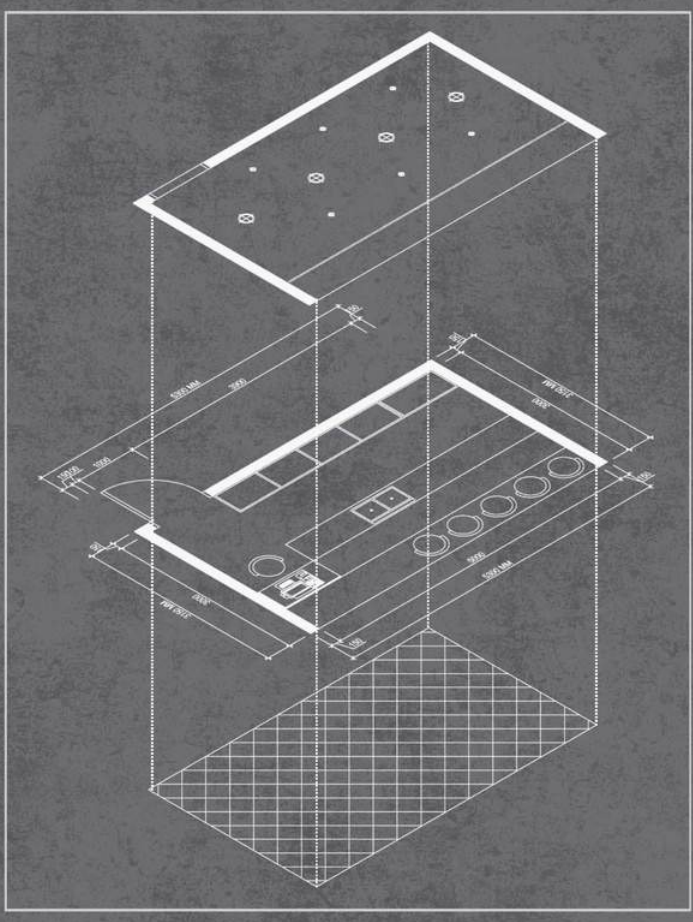
TOTAL SQM

16.70 SQM

01

02

03



LEGEND

01 REFLECTED CEILING PLAN

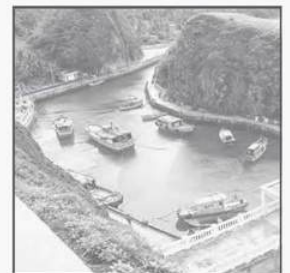
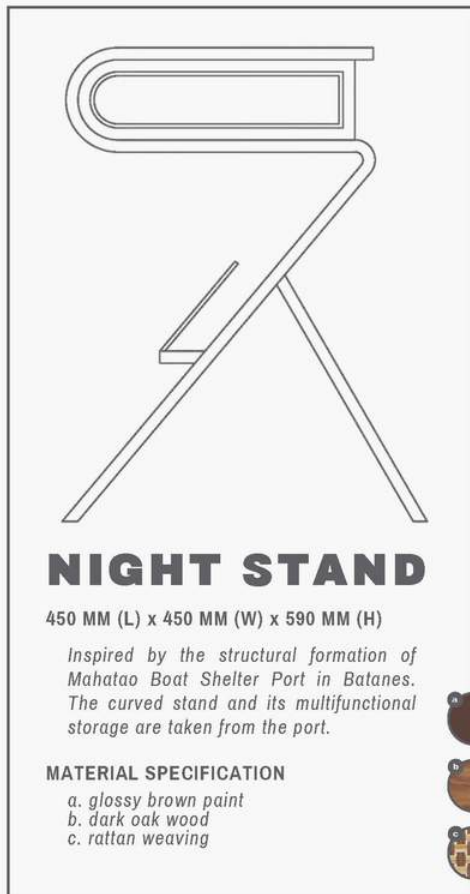
02 AS-BUILT PLAN & FURNITURE LAYOUT

03 FLOOR PATTERN

FURNITURE DESIGN

01 night stand | 02 conference table | 03 almario | 04 sofa lounge

01 ● 02 ○ 03 ○ 04 ○



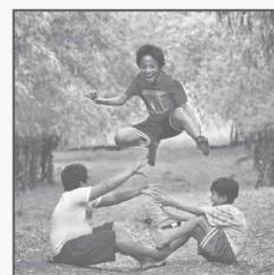
CONFERENCE TABLE

3600 MM (L) x 1200 MM (W) x 720 MM (H)

The conference table depicts the hand formations when playing *Luksong Tinik* (a traditional Filipino street game). With this in mind, the concept is applied to the base of the conference table, giving a unique yet sleek touch to be used in an office.

MATERIAL SPECIFICATION

- a. gray tempered glass
- b. green diamond steel plate



LOUNGE SOFA

2250 MM (L) x 780 MM (W) x 850 MM (H)

The lounge sofa has a triangular shape with soft edges. It uses fun bright wood color and light gray for upholstery. The furniture uses polished American oak wood for the majority of its part.

MATERIAL SPECIFICATION

- a. oak wood
- b. light gray denim fiber
- c. polished aluminum metal

